

AT IMMUNO^e WE FOCUS ON YOUR IMMUNE HEALTH

At our clinical practice, we believe that the immune system is directly involved in many of the disease processes. That is why we have made it our mission to conduct research that examines the more important, complex, and compelling issues surrounding the full spectrum of immune-related disorders. At each of our research and clinical sites, we incorporate advanced scientific and academic methods into our practice.



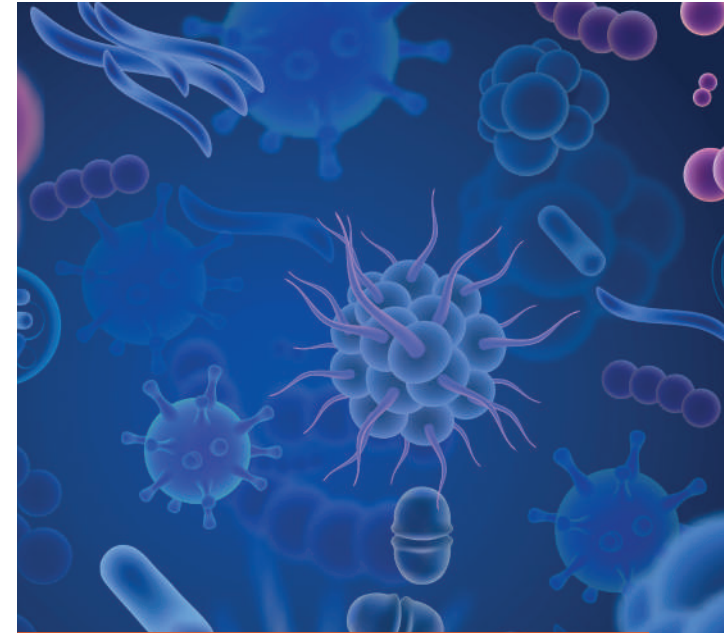
OUR MISSION

- To provide patients with the finest comprehensive care with an integrated delivery system
- Clinical expertise of providers in a wide range of disciplines
- Highly advanced, cutting-edge research and technologies
- Inflammation has reached epidemic proportions, which is why our focus on the immune system allows us to create critical early intervention strategies
- To practice—and assist in the development of—not only medicine for today but medicine for the future

FOR MORE INFORMATION OR TO SEE IF YOU QUALIFY, PLEASE CONTACT:



303.771.9000
IMMUNO^eRESEARCH.COM



Suffering from Primary Immunodeficiency Disease?

INTRODUCING A CLINICAL RESEARCH STUDY TO INVESTIGATE A STUDY DRUG FOR PRIMARY IMMUNODEFICIENCY DISEASE

CONSIDER VOLUNTEERING IN A CLINICAL RESEARCH STUDY!

303.771.9000
IMMUNO^eRESEARCH.COM



STUDY DOCTORS ARE TESTING AN INVESTIGATIONAL MEDICATION FOR PEOPLE WITH PRIMARY IMMUNODEFICIENCY DISEASE

- The purpose of this study is to compare the side effects between Bivigam, FDA approved IVIG, and other options on the market to treat primary immunodeficiency disease (PID)

ABOUT PID

- Primary immunodeficiency is a condition that impairs the immune system
- Many people with PID receive immunoglobulin treatment as a replacement therapy
- There is still a very long delay in diagnosing patients with PID

**BE PART OF THIS
NATIONWIDE CLINICAL STUDY:
YOUR PARTICIPATION
CAN MAKE A DIFFERENCE!**

WHO CAN PARTICIPATE?

- Anyone with diagnosis of primary immunodeficiency disease (PID) treated with immune globulin products

WHAT TO EXPECT:

- Patients would come in for normal infusions (total of 6) and vitals will be observed during and after infusion
- All study-related visits will be provided to participants at no cost
- All reasonable travel expenses will be reimbursed
- Participants will receive \$40 per infusion

REMEMBER—ASK QUESTIONS!

The study doctor will explain the benefits and risks of being in this research study. Please use this opportunity to ask questions. You may also take this brochure with you and talk to your doctor to help you decide if this research study is right for you.

WHY PARTICIPATE?

- All study-related treatments are at no cost to you
- Access to investigational treatment not currently available on the market
- You may be able to contribute to scientific developments that lead to new treatment options in the future



WHAT IS A CLINICAL RESEARCH TRIAL?

- A “Clinical Trial” is a research study designed to answer specific questions about investigational drugs or new ways of using known treatments.
- Physicians conduct clinical trials according to strict rules set by the Food and Drug Administration (FDA), ethical reviews committees, and the Federal Government.